

Bardavon Opera House
35 Market St.
Poughkeepsie, N.Y. 12601
ph (845) 473-5288
fax (845) 473-2074
email slamarca@bardavon.org

The Bardavon Opera House presents

RHAPSODY IN BLACK

Written and performed by Leland Gantt

Directed by Estelle Parsons

As developed at The Actors Studio

Please keep a copy of these requirements for your records and give a copy to your Technical Director.

COMPANY - The company consists of 1 performer, and 1 production staff traveling with one 6 passenger van. Parking should be made available near the theatre at no expense to the company.

RUNNING TIME - The full length production (evening or matinee) runs approximately 90 minutes (one set with no intermission).

ADVANCE - The Tour Production Manager will contact your T.D. at least two weeks prior to show date.

LOADING AREA - The theatre must be made available to the company 8 hours prior to the first performance. This includes dressing rooms, lobby and theatre proper and all areas considered standard work areas. Stage should be clear of all debris and unnecessary equipment prior to company arrival.

THESE TIME ESTIMATES MAY VARY FROM THEATRE TO THEATRE

LOAD IN - Load in will commence approximately 5 hours prior to curtain time. Lighting should be pre hung, gelled and patched according to the light plot you will be sent. No changes may be made to the standard plot without consulting with the Production Manager.

CREW CALLS -

LOAD IN - 2 Electricians (or amount required to focus in your venue)

1 Sound

SHOW CALL -1 Deck

1 Light Board Operator

LOAD OUT - Same as show call crew

Rhapsody in Black

Page 1 of 3

The above crew requirements are based on a typical load in/show situation. If the local union requires an additional complement of crew, these will be provided at no expense to the company. The above figures are only estimates and may be altered slightly at the time of advancing the show by the tours Production Manager.

CARPENTRY - Our production requires the use of house masking. In addition to the Main Curtain and Grand Teaser, the theatre will provide 3 sets of black legs and borders for appropriate masking. We may also require use of a cyclorama and or movie screen located upstage for projections, as well as a full stage blackdrop. If possible, we will attempt to utilize soft goods in their current positions. We ideally require a minimum stage space of 24' x 24'.

SET - The Local Presenter will be responsible for providing the following set pieces: (list to be finalized and forwarded)

ELECTRICS - We will utilize the house lighting system. If the house does not have a lighting system, the Local Presenter must provide one at no expense to the company. All electrics must be pre hung, gelled and patched according to the light plot, prior to our arrival. Our typical light plot, including FOH positions, will contain approximately 40-50 lighting instruments. The tour Production Manager can amend the light plot to help facilitate the house inventory. Please see separate "Lighting and Ground Plan" folder for light plot, channel hookup and instrument schedule.

SOUND - We will be using the house sound system for this production. If the house does not have a sound system, the Local Presenter must provide one at no expense to the company. Company travels with wireless mic and receiver, and PCIDI for laptop playback located at FOH. All inputs are XLR. We will require a minimum of a four input console, with graphic EQ to the mains (stereo mains please).

HEADSETS - The Local Presenter is required to provide headsets to the following positions: Stage Manager position, lighting console and sound console.

PROPS - 2 prop tables may be required backstage for use throughout the performance. The stage is to be swept and mopped prior to each rehearsal and performance at no expense to the company. The house will open at 1/2 hour prior to performance unless arranged with Production Manager to do otherwise.

WARDROBE - If the house has a washer and dryer, the company may elect to use these throughout the day at no cost to the company. On load in and performance days, these machines should be available exclusively for the company to use. An ironing board, iron and steamer should be available for our use as well. Portable costume racks should be available throughout the wardrobe work area and in all dressing room spaces.

LODGING: 2 single rooms in a comfortable, safe, clean 3 star or better hotel shall be provided by Local Presenter at no expense to the company.

Rhapsody in Black

Page 2 of 3

HOSPITALITY - On load in day there should be light foods for coffee break for production crew as well as local crew consisting of coffee, tea, juices, bagels, muffins, fresh fruit, etc. Lunch for 2 people should consist of sandwiches, pizza, salads, etc. Prior to each show there should be an assortment of beverages, tea, coffee, water and juice, as well as an assortment of light snacks, crackers, fruit, veggie platter, cookies etc. for the company. A hot meal for 2 people will be provided on each performance night or a buy out of \$25 per person can be arranged if preferred by the Local Presenter.

If you haven't already done so, please forward the following information to the Bardavon Opera House, 35 Market St. Poughkeepsie, N.Y. 12601 Attn: Stephen LaMarca

- 1) Local map with written directions to theater from major interstate or highway from NYC.
- 2) Diagrams showing theatre layout, line set schedules, floor plans as well as house inventories and any addition tech info you may have on your space.
- 3) List of local restaurants, malls, and general area info.
- 4) Information about hotel that the Company will be staying at.

The best possible performance is achieved when all requirements outlined in this rider are met. We are, however, flexible in some areas. Any questions or concerns should be addressed to the above address. This 3 page rider is considered an addendum to the contract and a signed copy must be returned to our offices.

ACCEPTED -

signature of presenter or rep required

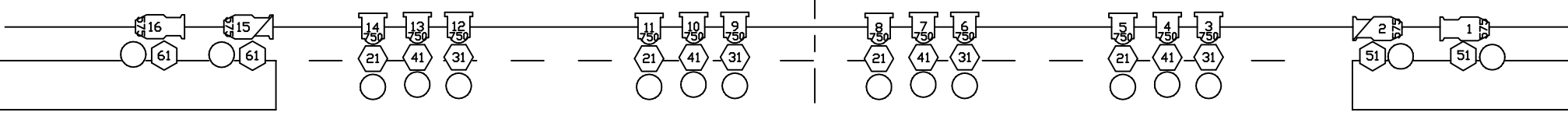
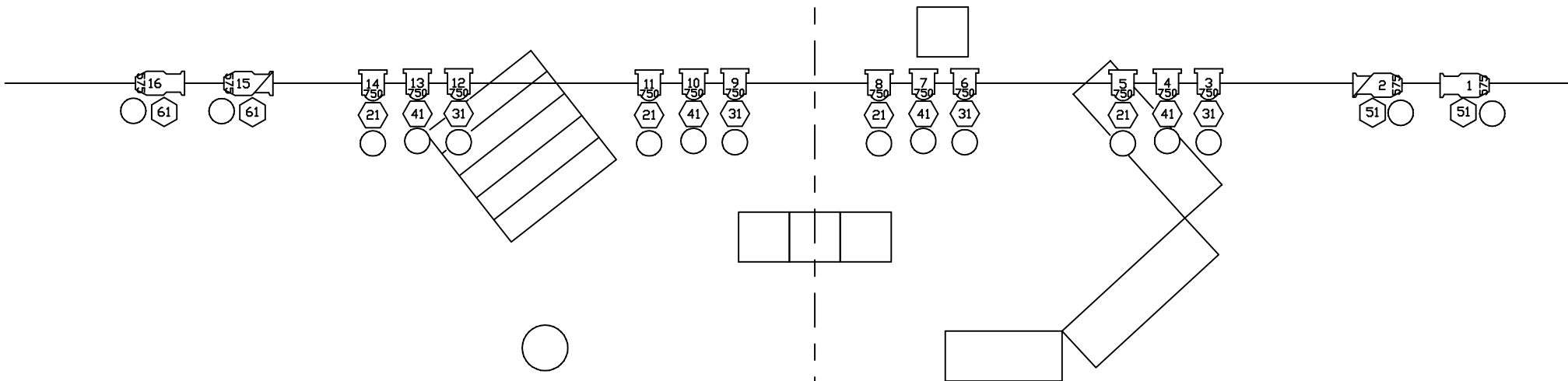
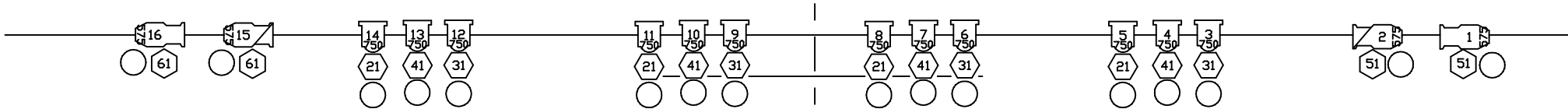
THEATRE -

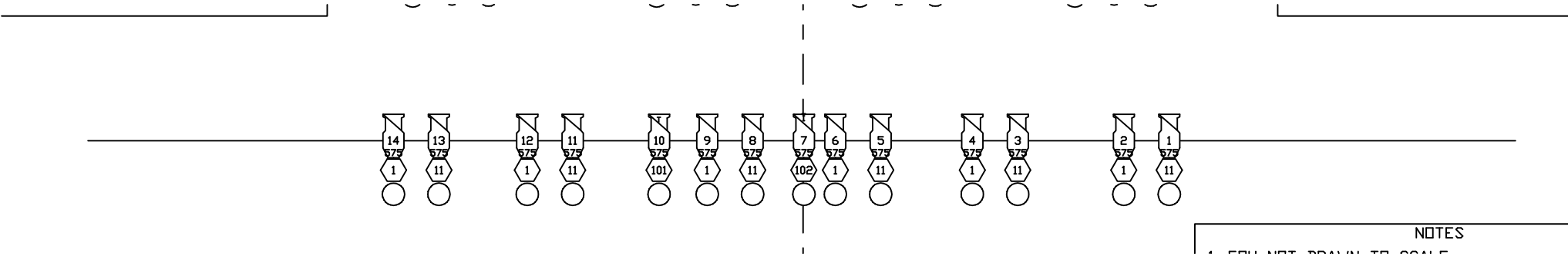
ADDRESS -

DATE - _____

PHONE - _____ FAX - _____

E-MAIL - _____





NOTES
1. SEE NEXT DRAWING TO SCALE

Rhapsody in Black ... CHANNEL HOOKUP

Channel	Dim	Position	U#	Type & Wattage	Purpose	Color & Template
(1)		'FOH 1'	2	'ETC 26 DEGREE S4' 575w	FOH WASH WARM	'R99'
		"	4	"	"	"
		"	6	"	"	"
		"	9	"	"	"
		"	12	"	"	"
		"	14	"	"	"
(11)		'FOH 1'	1	'ETC 26 DEGREE S4' 575w	FOH WASH N/C	'N/C'
		"	3	"	"	"
		"	5	"	"	"
		"	8	"	"	"
		"	11	"	"	"
		"	13	"	"	"
(21)		'Electric 1'	5	'6" FRESNEL' 750w	'Warm Wash'	'R99'
		"	8	"	"	"
		"	11	"	"	"
		"	14	"	"	"
		'Electric 2'	5	"	"	"
		"	8	"	"	"
		"	11	"	"	"
		"	14	"	"	"
		'Electric 3'	5	"	"	"
		"	8	"	"	"
		"	11	"	"	"
		"	14	"	"	"
(31)		'Electric 1'	3	'6" FRESNEL' 750w	'Cool Wash'	'R80'
		"	6	"	"	"
		"	9	"	"	"
		"	12	"	"	"
		'Electric 2'	3	"	"	"
		"	6	"	"	"
		"	9	"	"	"
		"	12	"	"	"
		'Electric 3'	3	"	"	"
		"	6	"	"	"
		"	9	"	"	"
		"	12	"	"	"

Rhapsody in Black ... CHANNEL HOOKUP

Channel	Dim	Position	U#	Type & Wattage	Purpose	Color & Template
(41)		'Electric 1'	4	'6" FRESNEL' 750w	'OpenWash'	'N/C'
		"	7	"	"	"
		"	10	"	"	"
		"	13	"	"	"
		'Electric 2'	4	"	"	"
		"	7	"	"	"
		"	10	"	"	"
		"	13	"	"	"
		'Electric 3'	4	"	"	"
		"	7	"	"	"
		"	10	"	"	"
		"	13	"	"	"
(51)		'Electric 1'	1	'ETC 36 DEGREE S4' 575w	'Hi Side Near'	'N/C'
		"	2	'ETC 26 DEGREE S4' 575w	'Hi Side Far'	"
		'Electric 2'	1	'ETC 36 DEGREE S4' 575w	'Hi Side Near'	"
		"	2	'ETC 26 DEGREE S4' 575w	'Hi Side Far'	"
		'Electric 3'	1	'ETC 36 DEGREE S4' 575w	'Hi Side Near'	"
		"	2	'ETC 26 DEGREE S4' 575w	'Hi Side Far'	"
(61)		'Electric 1'	15	'ETC 26 DEGREE S4' 575w	'Hi Side Far'	'N/C'
		"	16	'ETC 36 DEGREE S4' 575w	'Hi Side Near'	"
		'Electric 2'	15	'ETC 26 DEGREE S4' 575w	'Hi Side Far'	"
		"	16	'ETC 36 DEGREE S4' 575w	'Hi Side Near'	"
		'Electric 3'	15	'ETC 26 DEGREE S4' 575w	'Hi Side Far'	"
		"	16	'ETC 36 DEGREE S4' 575w	'Hi Side Near'	"
(101)		'FOH 1'	10	'ETC 26 DEGREE S4' 575w	'Bench DSL'	R67, T:Window
(102)		'FOH 1'	7	'ETC 26 DEGREE S4' 575w	'Judge Sp 1'	'N/C', T:Iris

Rhapsody in Bla... INSTRUMENT SCHEDULE

'FOH 1'

U#	Instrument Type	Watts	Purpose	Color & Template	Chn	Dim
1	'ETC 26 DEGREE S4'	575w	FOH WASH N/C	'N/C'	(11)	
2	'ETC 26 DEGREE S4'	575w	FOH WASH WARM	'R99'	(1)	
3	'ETC 26 DEGREE S4'	575w	FOH WASH N/C	'N/C'	(11)	
4	'ETC 26 DEGREE S4'	575w	FOH WASH WARM	'R99'	(1)	
5	'ETC 26 DEGREE S4'	575w	FOH WASH N/C	'N/C'	(11)	
6	'ETC 26 DEGREE S4'	575w	FOH WASH WARM	'R99'	(1)	
7	'ETC 26 DEGREE S4'	575w	'Judge Sp 1'	'N/C', T:Iris	(102)	
8	'ETC 26 DEGREE S4'	575w	FOH WASH N/C	'N/C'	(11)	
9	'ETC 26 DEGREE S4'	575w	FOH WASH WARM	'R99'	(1)	
10	'ETC 26 DEGREE S4'	575w	'Bench DSL'	R67, T:Window	(101)	
11	'ETC 26 DEGREE S4'	575w	FOH WASH N/C	'N/C'	(11)	
12	'ETC 26 DEGREE S4'	575w	FOH WASH WARM	'R99'	(1)	
13	'ETC 26 DEGREE S4'	575w	FOH WASH N/C	'N/C'	(11)	
14	'ETC 26 DEGREE S4'	575w	FOH WASH WARM	'R99'	(1)	

'Electric 1'

U#	Instrument Type	Watts	Purpose	Color & Template	Chn	Dim
1	'ETC 36 DEGREE S4'	575w	'Hi Side Near'	'N/C'	(51)	
2	'ETC 26 DEGREE S4'	575w	'Hi Side Far'	'N/C'	(51)	
3	'6" FRESNEL'	750w	'Cool Wash'	'R80'	(31)	
4	'6" FRESNEL'	750w	'OpenWash'	'N/C'	(41)	
5	'6" FRESNEL'	750w	'Warm Wash'	'R99'	(21)	
6	'6" FRESNEL'	750w	'Cool Wash'	'R80'	(31)	
7	'6" FRESNEL'	750w	'OpenWash'	'N/C'	(41)	
8	'6" FRESNEL'	750w	'Warm Wash'	'R99'	(21)	
9	'6" FRESNEL'	750w	'Cool Wash'	'R80'	(31)	
10	'6" FRESNEL'	750w	'OpenWash'	'N/C'	(41)	
11	'6" FRESNEL'	750w	'Warm Wash'	'R99'	(21)	
12	'6" FRESNEL'	750w	'Cool Wash'	'R80'	(31)	
13	'6" FRESNEL'	750w	'OpenWash'	'N/C'	(41)	
14	'6" FRESNEL'	750w	'Warm Wash'	'R99'	(21)	
15	'ETC 26 DEGREE S4'	575w	'Hi Side Far'	'N/C'	(61)	
16	'ETC 36 DEGREE S4'	575w	'Hi Side Near'	'N/C'	(61)	

'Electric 2'

U#	Instrument Type	Watts	Purpose	Color & Template	Chn	Dim
1	'ETC 36 DEGREE S4'	575w	'Hi Side Near'	'N/C'	(51)	
2	'ETC 26 DEGREE S4'	575w	'Hi Side Far'	'N/C'	(51)	
3	'6" FRESNEL'	750w	'Cool Wash'	'R80'	(31)	
4	'6" FRESNEL'	750w	'OpenWash'	'N/C'	(41)	
5	'6" FRESNEL'	750w	'Warm Wash'	'R99'	(21)	
6	'6" FRESNEL'	750w	'Cool Wash'	'R80'	(31)	
7	'6" FRESNEL'	750w	'OpenWash'	'N/C'	(41)	
8	'6" FRESNEL'	750w	'Warm Wash'	'R99'	(21)	
9	'6" FRESNEL'	750w	'Cool Wash'	'R80'	(31)	
10	'6" FRESNEL'	750w	'OpenWash'	'N/C'	(41)	
11	'6" FRESNEL'	750w	'Warm Wash'	'R99'	(21)	
12	'6" FRESNEL'	750w	'Cool Wash'	'R80'	(31)	
13	'6" FRESNEL'	750w	'OpenWash'	'N/C'	(41)	
14	'6" FRESNEL'	750w	'Warm Wash'	'R99'	(21)	
15	'ETC 26 DEGREE S4'	575w	'Hi Side Far'	'N/C'	(61)	
16	'ETC 36 DEGREE S4'	575w	'Hi Side Near'	'N/C'	(61)	

'Electric 3'

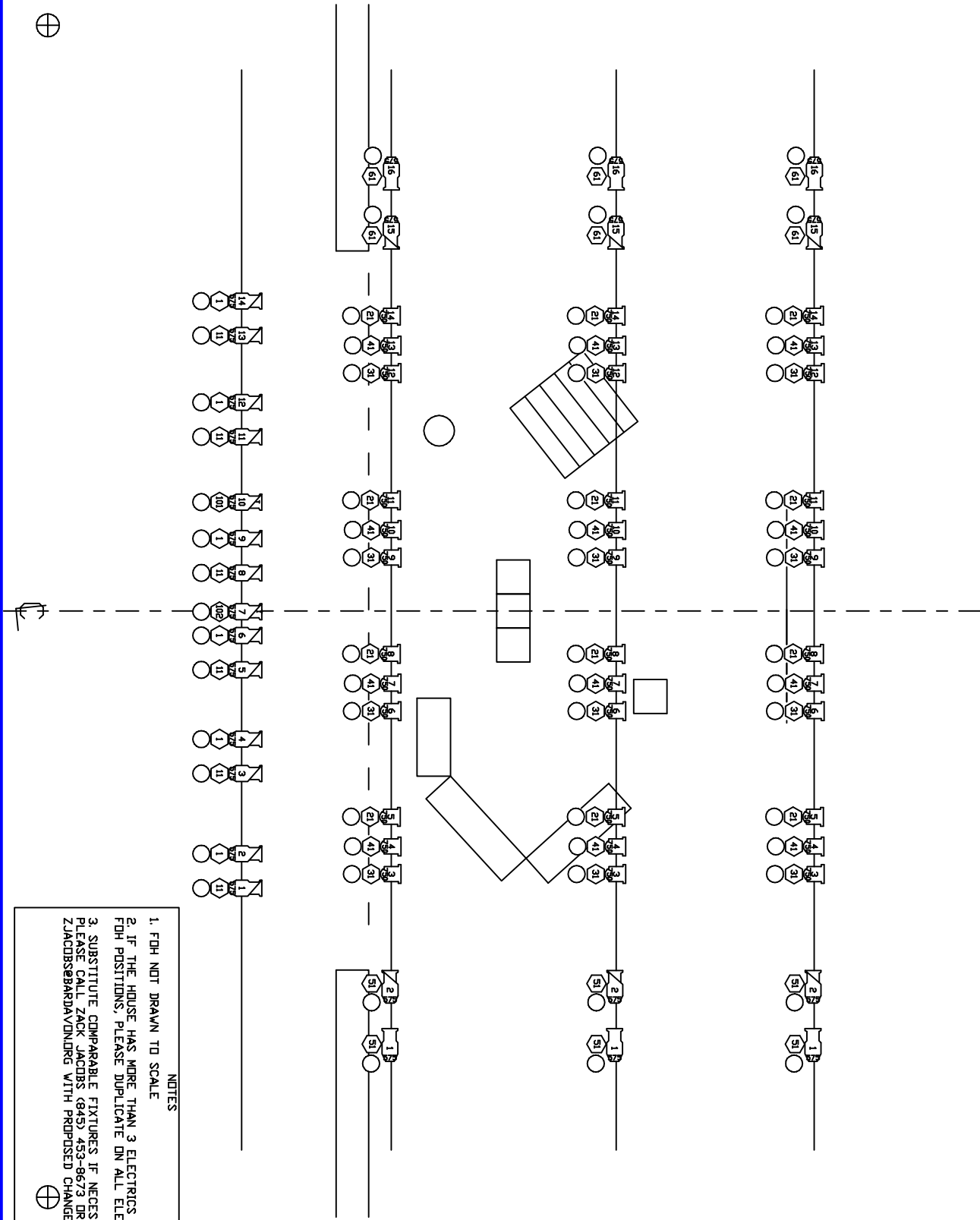
U#	Instrument Type	Watts	Purpose	Color & Template	Chn	Dim
1	'ETC 36 DEGREE S4'	575w	'Hi Side Near'	'N/C'	(51)	
2	'ETC 26 DEGREE S4'	575w	'Hi Side Far'	'N/C'	(51)	
3	'6" FRESNEL'	750w	'Cool Wash'	'R80'	(31)	
4	'6" FRESNEL'	750w	'OpenWash'	'N/C'	(41)	
5	'6" FRESNEL'	750w	'Warm Wash'	'R99'	(21)	
6	'6" FRESNEL'	750w	'Cool Wash'	'R80'	(31)	
7	'6" FRESNEL'	750w	'OpenWash'	'N/C'	(41)	
8	'6" FRESNEL'	750w	'Warm Wash'	'R99'	(21)	
9	'6" FRESNEL'	750w	'Cool Wash'	'R80'	(31)	
10	'6" FRESNEL'	750w	'OpenWash'	'N/C'	(41)	
11	'6" FRESNEL'	750w	'Warm Wash'	'R99'	(21)	
12	'6" FRESNEL'	750w	'Cool Wash'	'R80'	(31)	
13	'6" FRESNEL'	750w	'OpenWash'	'N/C'	(41)	
14	'6" FRESNEL'	750w	'Warm Wash'	'R99'	(21)	
15	'ETC 26 DEGREE S4'	575w	'Hi Side Far'	'N/C'	(61)	
16	'ETC 36 DEGREE S4'	575w	'Hi Side Near'	'N/C'	(61)	

Rhapsody in Bla... INSTRUMENT SCHEDULE

09 Feb 2015

PAGE INDEX

'FOH 1'	1	'Electric 2'	2
'Electric 1'	1	'Electric 3'	2



NOTES

1. FDUH NOT DRAWN TO SCALE
2. IF THE HOUSE HAS MORE THAN 3 ELECTRICS AND FDUH POSITIONS, PLEASE DUPLICATE IN ALL ELECTRICS.
3. SUBSTITUTE COMPARABLE FIXTURES IF NECESSARY. PLEASE CALL ZACK JACOBS (845) 453-8673 OR EMAIL ZJACOBS@BARDAVONDRG WITH PROPOSED CHANGES.

THIS DRAWING REPRESENTS THE CONSTRUCTION SUGGESTIONS ONLY. THE CONTRACTOR SHALL BE RESPONSIBLE FOR VERIFYING ALL DIMENSIONS AND CONDITIONS ON SITE. THE CONTRACTOR SHALL BE RESPONSIBLE FOR OBTAINING ALL NECESSARY PERMITS AND APPROVALS. THE CONTRACTOR SHALL BE RESPONSIBLE FOR OBTAINING ALL NECESSARY INSURANCE COVERAGE. THE CONTRACTOR SHALL BE RESPONSIBLE FOR OBTAINING ALL NECESSARY UTILITIES. THE CONTRACTOR SHALL BE RESPONSIBLE FOR OBTAINING ALL NECESSARY TRANSPORTATION. THE CONTRACTOR SHALL BE RESPONSIBLE FOR OBTAINING ALL NECESSARY STORAGE. THE CONTRACTOR SHALL BE RESPONSIBLE FOR OBTAINING ALL NECESSARY OFFICE SPACE. THE CONTRACTOR SHALL BE RESPONSIBLE FOR OBTAINING ALL NECESSARY MEETING ROOMS. THE CONTRACTOR SHALL BE RESPONSIBLE FOR OBTAINING ALL NECESSARY CONFERENCE ROOMS. THE CONTRACTOR SHALL BE RESPONSIBLE FOR OBTAINING ALL NECESSARY BREAK ROOMS. THE CONTRACTOR SHALL BE RESPONSIBLE FOR OBTAINING ALL NECESSARY RESTROOMS. THE CONTRACTOR SHALL BE RESPONSIBLE FOR OBTAINING ALL NECESSARY SHOWERS. THE CONTRACTOR SHALL BE RESPONSIBLE FOR OBTAINING ALL NECESSARY LOCKERS. THE CONTRACTOR SHALL BE RESPONSIBLE FOR OBTAINING ALL NECESSARY STORAGE lockers. THE CONTRACTOR SHALL BE RESPONSIBLE FOR OBTAINING ALL NECESSARY OFFICE lockers. THE CONTRACTOR SHALL BE RESPONSIBLE FOR OBTAINING ALL NECESSARY MEETING lockers. THE CONTRACTOR SHALL BE RESPONSIBLE FOR OBTAINING ALL NECESSARY CONFERENCE lockers. THE CONTRACTOR SHALL BE RESPONSIBLE FOR OBTAINING ALL NECESSARY BREAK lockers. THE CONTRACTOR SHALL BE RESPONSIBLE FOR OBTAINING ALL NECESSARY RESTROOM lockers. THE CONTRACTOR SHALL BE RESPONSIBLE FOR OBTAINING ALL NECESSARY SHOWER lockers. THE CONTRACTOR SHALL BE RESPONSIBLE FOR OBTAINING ALL NECESSARY LOCKER lockers.

TOURING LIGHT PLOT

DIRECTOR:
 CHOREOGRAPHER:
 SCENIC DESIGN:
 COSTUME DESIGN:
 LIGHTING DESIGN:
 TECHNICAL DIRECTOR: ZACK JACOBS

SCALE 1/2"=1'-0" DATE DECEMBER 2014

RHAPSODY IN BLACK

THE BARDAVON TOURING PRODUCTIONS

AT:

KEY

SHADE FROM 36 303
 SHADE FROM 36 303
 SHADE FROM 36 303
 FRESHLY 793 V

WATTAGE
 TEMP/AT/252
 DIMENSION
 RETIREMENT &

SHEET # 1 OF LEADIN GA